

# Intrinsically Safe Permissible Dual-Light<sup>™</sup> Flashlight w/Dual Magnets

Flashlight



Floodlight



Dual-Light



**TECHNOLOGY**

This non-rechargeable Dual-Light<sup>™</sup> flashlight with dual magnets is cETLus, ATEX and IECEx listed Intrinsically Safe Permissible and PESO approved. It uses a CREE<sup>®</sup> LED rated at 120 lumens that works in conjunction with a high-efficiency deep parabolic reflector to create a usable flashlight beam rated at 170 meters. A 120 lumens unfocused floodlight is integrated into the housing which is perfect for close-up illumination. Additionally both the flashlight and the floodlight can be turned on at the same time for maximum versatility. The dual body switches provides momentary or constant-on functionality for the flashlight and on/off functionality for the floodlight. Additionally, the integrated magnets located in the base of the handle and pocket clip, provide for almost limitless hands-free usage. Power come from 3AA batteries (not included).

**INTRINSICALLY SAFE  
 PERMISSIBLE**



**120** Flashlight Lumens

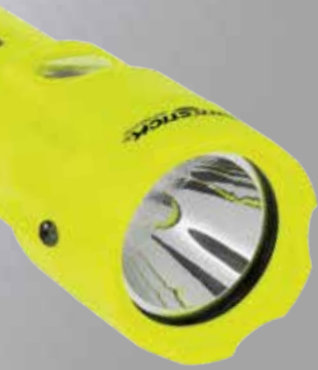
**120** Floodlight Lumens

**240** Dual-Light<sup>™</sup> Lumens

- cETLus, ATEX, IECEx and MSHA listed Intrinsically Safe Permissible
- PESO Approval No : A/P/HQ/DL/104/5544 (P409850)
- Flashlight/floodlight/Dual-Light<sup>™</sup>
- Two Integrated hands-free magnets
- Beam distance rated at 170 meters



**XPP 5422GM**



### Intrinsically Safe Permissible Dual-Light™ Flashlight w/Dual Magnets



XPP-5422GM

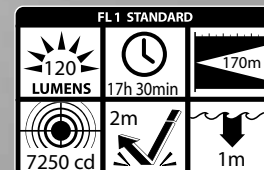
High-efficiency deep parabolic reflector

#### FEATURES

- Flashlight – floodlight – Dual-Light™
- CREE® LED technology – 50,000 + hours LED life
- Momentary or constant-on flashlight
- Sharp focused beam for distance illumination
- Unfocused wide-beam floodlight for close-up illumination
- Dual-Light (flashlight & floodlight at same time) for maximum versatility and user safety
- Powerful integrated magnets built into the base and clip for multiple hands-free options
- Engineered polymer housing
- Non-slip grip
- Dual body switches
- Waterproof and Dustproof
- Impact & chemical resistant
- Built-in pocket/belt clip
- Includes removable lanyard
- Requires 3 AA batteries (not included)
- Limited Lifetime Warranty\*

#### SPECIFICATIONS

- Lumens: flashlight-120, floodlight-120, dual-light-240
- Run-time: flashlight-17.5 hrs, floodlight-17.5 hrs, dual-light-4.5 hrs
- Beam distance: 170 meters
- Water/Dust rating: IP-67
- Drop rating: 2 meters
- Length: 7.2in, head diameter: 1.8in, handle diameter: 1.5 x 1.1in, weight: 6.9oz



#### INCLUDED

- Flashlight with built-in pocket/belt clip
- Removable lanyard

#### SAFETY RATING

cETLus, ATEX, IECEx and MSHA listed Intrinsically Safe Permissible

PESO Approval No : A/P/HQ/DL/104/5544 (P409850)



Built in pocket/ belt clip with integrated magnet

Integrated magnet built into the handle

High-efficiency deep parabolic reflector

Wide-beam floodlight



Hands-free magnet in base



Hands-free magnet in pocket clip



Patent 7,738,229

Permissible Nightstick 5422 Flashlight/Floodlight

**MSHA** APPROVAL No. 20-A130001-0  
TESTED FOR INTRINSIC SAFETY IN METHANE-AIR MIXTURES ONLY  
WARNINGS: MSHA approved for use with three AA Duracell Type PC1500, Energizer Type EN91, and Energizer Type L91 batteries only. Replace the batteries in fresh air only and replace all batteries at the same time. Do not mix batteries from different manufacturers or of different types. Energizer Lithium (Type L91) batteries are to be replaced by a qualified technician only. The Model Nightstick 5422 must not be opened in areas where permissibility is required.

**Intertek**  
ID 4002026  
INTRINSICALLY SAFE  
SECURITE INTRINSEQUE

CLASS I DIV 1 GRPS A-D T3 Ex ia I Ma  
CLASS II & III DIV 1 GRPS E-G T135C Ex ia IIC T3 Ga  
CLASS I ZONE 0 AEx ia IIC T3 Ga Intertek ITS 13 ATEX27837X  
CLASS I ZONE 0 Ex ia IIC T3 Ga IECEx ETL 13.0026X  
-20°C ≤ Tamb ≤ +40°C  
1.5V/Cell AA Alkaline

**Conforms to:**  
ANSI/UL STD 913, ANSI/UL 60079-0, ANSI/UL 60079-11, ANSI/ISA 60079-26

**Certified to:**  
CAN/CSA STD C22.2 No 157, CAN/CSA STD C22.2 No 60079-0, CAN/CSA STD C22.2 No 60079-11, CSA STD C22.2 No 25

#### Clients



Model XPP-5422GM UPC 0 17398

80448 6

\*Limited Lifetime Warranty • Product is warranted to be free from defects in workmanship and materials for the original purchaser's lifetime. The Limited Lifetime Warranty includes the LEDs, housing and lenses. Rechargeable batteries, chargers, switches, electronics and included accessories are warranted for a period of two (2) years with proof of purchase. Disposable, non-rechargeable batteries are excluded from this warranty. Normal wear and failures which are caused by accidents, misuse, abuse, faulty installation and lightning damage are also excluded.