

**Suitable For  
Electricity Boards**

The ResQmax™ is a new generation Line-throwing Appliance fueled by compressed air, specifically designed to deploy a Line only & retrieval Line to an otherwise inaccessible point in both land-based and maritime environments, providing an emergency response capability without putting the rescuer at risk.

*The ResQmax is non-pyrotechnic, reusable and refillable, utilizing an air-thrust technology.*

*The ResQmax Launcher is made from high-impact polycarbonate for durability and excellent impact resistance.*

*The ResQmax uses standard Projectiles with service pressure of 3,000 psi / 207 Bar.*

# ResQmax

Lightweight, Non-Pyrotechnic, Utility Launcher

## Application Areas

- For Smooth Laying of Transmission Lines During Natural Obstacles (highly inaccessible areas) i.e. Valleys, Mountains, Rivers etc.
- Launch Pilot Lines to Pull Heavier Ropes



# ResQmax

## MAXimum Distance

The ResQmax is capable of deploying a Line up to 400 feet / 122 meters with the standard Projectile depending on the service pressure, the weight of the Line, and type of the Projectile used.

## MAXimum Safety

The Safety Mechanism is "always ON," resetting automatically when a Projectile is inserted.

The Projectile's "push-click" engagement allows easy reloading, even in the dark.

A Pressure Relief Assembly prevents unsafe pressure build-up that could result from exposure of the Projectile to extreme heat.

## MAXimum Performance

**Multi-Shot Capacity** - our patented Nozzle Valve permits any number of the Projectiles to be precharged and stored with the ResQmax, allowing deployment of multiple Projectiles in rapid succession.

## MAXimum Ease of Use

The ResQmax Filler System utilizes a "quick coupler" connectors and selection of adapters to permit charging of the Projectiles from multiple air sources.



## Features

> Horizontal Range: up to 420 ft / 128 m > Vertical Range (line)

## Problem

Installing electrical cables and communication lines can be challenging when the topography of the land along the intended route includes canyons, mountains or water bodies. This leads to physical hardship on employees, delay in construction schedules, costly expense of helicopters.

### Line Projectile

The Line Projectile will deploy a variety of Lines over a range of distances, depending on the service pressure and the type of Line used.

(See Conservative Distances Chart on the back page.)



### Red Training Projectile

This Projectile is designed for training or for repeated use when deploying a Line from the launch point to a hard surface. The protective cover is a low-recoil high-density urethane material reducing projectile "bounce" on contact.



### Luminescent Training Projectile

The luminescent protective cover combines the best features of high initial brightness and long afterglow for visibility during nighttime use. It can be excited by daylight, incandescent, fluorescent, or ultraviolet light. This excitation process can be repeated indefinitely.



### Folding Stock

The Folding Stock enhances the operator's ability to aim the Projectile more accurately. When in the collapsed position, the Folding Stock becomes a convenient carrying handle.



only): up to 165 ft / 50 m > Rope Diameters: 3.0 mm – 8.0 mm

## Solution

This may be avoided by using the ResQmax to deploy a messenger line across the otherwise impassable terrain path. The standard messenger line with low electrical conductivity can also be deployed vertically over energised lines and up electrical towers.

### Quick Coupler Fittings

To easily and quickly connect the ResQmax Filler Hose Assembly to the compressed air source, different fittings are available for interface with DIN, SCBA, or SCUBA valves.



### Kit Carry Bag

The Kit Carry Bag is made from 1000-denier Cordura fabric, with two external zippered pockets, one internal zippered pocket, and a weatherproof membrane over the entire footprint.



### Pelican Transport/Storage Case

This unbreakable, watertight, dust-proof, chemical resistant, and corrosion-proof case comes with a lifetime guarantee. Equipped with an extending handle and rollers, this case is used for transport and storage of the ResQmax.

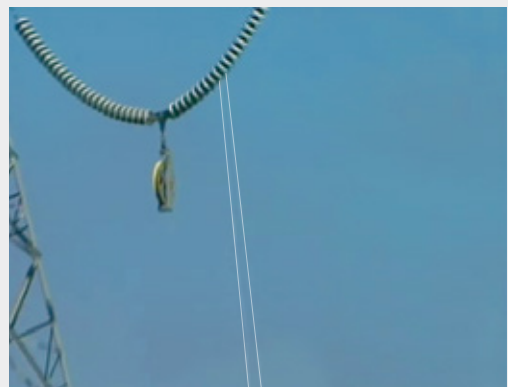


### Tool Kit

The Tool Kit provides all the tools needed for operational maintenance of the ResQmax.



## Simple & Easy For Deploying



# Technical Specifications

## ResQmax Launcher - Part #500

Specifications	Measurement	
Length (Folding Stock Closed)	16.8 in	42.5 cm
Length (Folding Stock Open)	28.7 in	72.9 cm
Height (Folding Stock Closed)	13.2 in	21.6 cm
Height (Folding Stock Open)	13.2 in	21.6 cm
Barrel Width	3.4 in	8.6 cm
Weight	3.4	1.5
Launcher Housing	Polycarbonate	
Color	Red	
Shape	Irregular	
Internal Mechanism	Stainless Steel	

## Filler Hose Assembly - Part # 911-S; 912-S; 913-S

Specifications	Measurement	
Overall Length	42.8 in	108.8 cm
Hose Diameter	0.5 in	1.3 cm
Total Weight	2.2 lbs	1.0 kg
Overall Service Rating	5,000 psi	345 bar
Hose Material	Nylon and Aramid Fiber	
Hose Finish	Black Urethane	
Filler Block Material	6061-T6 Aluminum	
Filler Block Finish	Black Anodized	
Bleed Screw	Stainless Steel and Nylon	
Adapter (DIN, SCBA, SCUBA)	Stainless Steel	

## Projectiles

Part	Part No.	Length		Diameter		Weight		Cover Material	Color
Standard Projectile	300-8	13.4 in	34 cm	2.375 in	8.03 cm	1.8 lbs	0.8 kg	Polyethylene	Black
Bling Projectile	301-8	23.5 in	58.7 cm	2.375 in	8.03 cm	2.8 lbs	1.3 kg	Polyethylene	Red
Training Projectile	305-8 308-8	13.7 in	34.8 cm	2.28 in	5.78 cm	1.8 lbs	0.8 kg	High Density Urethane	Red or Flourescent

Projectiles are made from 6061-T6 Al, have a black powder-coat finish, and a Service Pressure of 3,000psi  
Nozzles are Stainless Steel; Nozzle Protectors are black glass-filled nylon.  
Sling is yellow, made of nylon, and is equipped with auto-inflating mechanism and manual-inflating oral tube.

## Rope Options

Part	Part No.	Length		Diameter	Specific Gravity	Minimum Break Load		Weight per length	
Spectra	803	500 ft	152 m	4 mm	<1	1,500 lbs	880 kg	1.75 lbs	0.8 kg
Spectra	804	500 ft	152 m	6 mm	<1	3,000 lbs	1,380 kg	3.5 lbs	1.8 kg
Dacron	805	500 ft	152 m	3 mm	<1	500 lbs	225 kg	1.85 lbs	0.8 kg
Polyspectra	806	300 ft	82 m	8 mm	<1	2,200 lbs	1,000 kg	4.8 lbs	2.2 kg
Polypropylene	808	328 ft	100 m	8 mm	<1	1,100 lbs	500 kg	3.1 lbs	1.4 kg

Line Containers are irregularly shaped and made of polyethylene with a black finish. Hinges are Stainless Steel.  
Compact Line Container Weight: 1.8lbs / 0.8 kg Large Line Container Weight: 2.9lbs / 1.3kg

## Bags & Cases

Part	Part No.	Length		Width		Height		Weight	
Kit Bag	907	28 in	70 cm	14 in	35 cm	18 in	41 cm	2.6 lbs	1.0 kg
Pelican Case - Small	908	31.59 in	80.2 cm	20.47 in	52 cm	12.45 in	31.8 cm	28.3 lbs	13.3 kg
Pelican Case - Large	909	31.59 in	80.2 cm	22.99 in	58.4 cm	19.48 in	49.5 cm	37.7 lbs	17.1 kg

Cases are made of Copolymer with Black finish. Small Pelican Case will hold a maximum of 2 Compact Line Containers  
Large Pelican Case will hold a maximum of 2 Large Line Containers or 1 Large and 2 Small Line Containers.  
\*Please Note: All values are displayed as maximum, external measurements.

**aska**<sup>®</sup>  
Aska Equipments Ltd.



R-482, New Rajendra Nagar, Ganga Ram Hospital  
Square, Shankar Road, New Delhi -110060

Tel. : +91-11-49458800 (30 lines)  
Fax: +91-11-49458844

Email: info@askagroup.com  
website: www.askagroup.com

### Sales & Service Centers

MUMBAI - HYDERABAD - LUCKNOW - AHMEDABAD - NAGPUR - KOLKATA - DHANBAD - CHENNAI - BANGALORE -  
CHANDIGARH - JAMMU - GUWAHATI - COIMBATORE